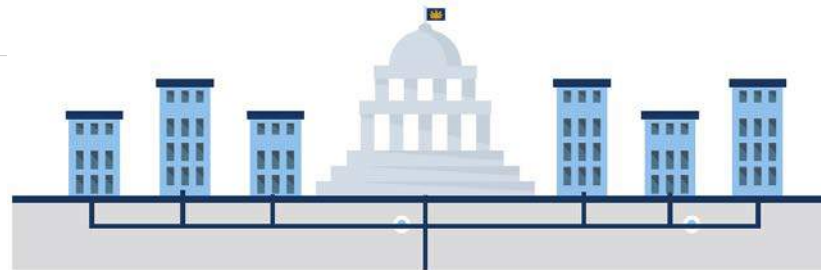




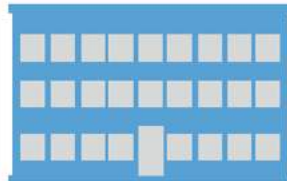
**PENNSYLVANIA DEPARTMENT OF HUMAN SERVICES**

# **SUPPORTING PENNSYLVANIANS THROUGH HOUSING**





## TOO MANY PENNSYLVANIANS IN INSTITUTIONS COULD LIVE IN THE COMMUNITY WITH ASSISTANCE



# 53,574 PEOPLE

live in a government-assisted nursing home,  
state hospital, or state center

### NATIONAL AVG. COST OF CARE\*



**NURSING HOME: \$62,750**



**COMMUNITY BASED: \$31,341**

(\*PER PERSON, PER YEAR)



Transitioning  
**500** individuals  
from nursing homes  
to independent  
living could save  
**\$15.7 MILLION**  
per year




## TOO MANY PENNSYLVANIANS EXPERIENCE HOMELESSNESS OR ARE AT RISK OF HOMELESSNESS

 **15,421**

**PENNSYLVANIANS EXPERIENCED HOMELESSNESS IN JANUARY 2015. AMONG THEM WERE:**



 **IN PENNSYLVANIA: 4.65% increase** in number of people who experience homelessness

 **NATIONALLY: 9.35% decline** in number of people who experience homelessness

### HOMELESSNESS AND EDUCATION



**AVG. TEST SCORE OF CHILDREN WITH HOMES**



**AVG. TEST SCORE OF CHILDREN WITHOUT HOMES**



## TOO MANY PENNSYLVANIANS WHO HAVE EXTREMELY LOW INCOMES ARE RENT-BURDENED



HOUSEHOLDS WITH  
EXTREMELY LOW  
INCOMES MAKE

LESS THAN  
**\$21,106**  
PER YEAR



MAXIMUM RENT  
THEY CAN AFFORD:  
**\$528**  
PER MONTH

HOUSING IS 'AFFORDABLE'  
IF IT TAKES UP

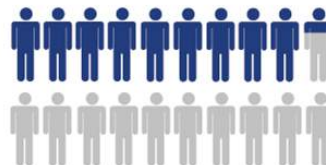
**NO MORE THAN 30%**

OF A HOUSEHOLD'S INCOME



**46.6%**

OF PENNSYLVANIANS



PAY MORE THAN THAT  
ON RENT AND UTILITIES



ONE-BEDROOM

AVERAGE FAIR  
MARKET RENT  
IN PENNSYLVANIA:

**\$739**  
PER MONTH



HOURLY MINIMUM  
WAGE IN PA:

**\$7.25**

HOURLY EARNINGS  
NEEDED TO AFFORD  
FAIR MARKET RENT:

**\$14.21**

## THE SOLUTION

### GOVERNMENT THAT WORKS



Remove barriers unique to each individual



Connect people with housing opportunities



Expand affordable housing

CONNECTING PEOPLE TO AFFORDABLE, INTEGRATED AND SUPPORTIVE HOUSING BY LEVERAGING RESOURCES AND COLLABORATING WITH ALL LEVELS OF GOVERNMENT AND PRIVATE AGENCIES.



Partner with local agencies



Pool resources and share ideas



Utilize data to measure progress



## STRATEGY NO. 1: CONNECT PEOPLE TO HOUSING



**GOAL NO. 1:** Build better local and state housing partnerships.

**GOAL NO. 2:** Provide IT tools to the Local Referral Network to better connect individuals and families to housing.

**GOAL NO. 3:** Expand the Section 811 Project Rental Assistance Program in partnership with PHFA.

## **STRATEGY NO. 2: STRENGTHEN SERVICES AND SUPPORTS THAT ADDRESS HOUSING NEEDS.**



**GOAL NO. 1:** Maximize Medicaid funding for housing-related services and supports.

**GOAL NO. 2:** Increase housing opportunities and services for individuals in the criminal justice system with mental illness and substance use disorder.

## **STRATEGY NO. 3: EXPAND FUNDING OPPORTUNITIES FOR HOUSING.**



- GOAL NO. 1:** Develop public and private partnerships.
- GOAL NO. 2:** Target existing DHS resources for housing programs.
- GOAL NO. 3:** Redirect existing homeless and housing services resources toward housing; partner with DCED, PHFA and the Homeless Continua of Care.



## STRATEGY NO. 4: MEASURE AND COMMUNICATE PROGRESS



**GOAL NO. 1:** Track metrics and measure outcomes.

**GOAL NO. 2:** Continually improve DHS programs.

**GOAL NO. 3:** Communicate the progress of the DHS Housing Strategy to stakeholders and advocates.

To read the DHS Five Year Housing Strategy, please visit:

[www.dhs.pa.gov/citizens/housing](http://www.dhs.pa.gov/citizens/housing)

## PARTNERS

Thank you to the Pennsylvania Housing Finance Agency and the Pennsylvania Department of Community and Economic Development for partnering with DHS to support Pennsylvanians through housing.



## Other resources:

### DHS HealthChoices

[www.dhs.pa.gov/citizens/healthcaremedicalassistance/healthchoicesgeneralinformation](http://www.dhs.pa.gov/citizens/healthcaremedicalassistance/healthchoicesgeneralinformation)

### DHS Waivers

[www.dhs.pa.gov/learnaboutdhs/waiverinformation](http://www.dhs.pa.gov/learnaboutdhs/waiverinformation)

### CMCS Housing Services Informational Bulletin

[www.medicaid.gov/federal-policy-guidance/downloads/CIB-06-26-2015.pdf](http://www.medicaid.gov/federal-policy-guidance/downloads/CIB-06-26-2015.pdf)

### PHFA's Online Rental & Homeownership Search Tool

[www.pahousingsearch.com](http://www.pahousingsearch.com)

For more information or to get involved, please contact:

**Ben Laudermilch**, Executive Housing Director  
717-409-3653 | [belaudermi@pa.gov](mailto:belaudermi@pa.gov)

**Jonathan McVey**, Executive Housing Coordinator  
717-395-9435 | [jomcvey@pa.gov](mailto:jomcvey@pa.gov)

**Beth Ellis**, Executive Housing Specialist  
717-909-2006 | [bellis@housingalliancepa.org](mailto:bellis@housingalliancepa.org)